

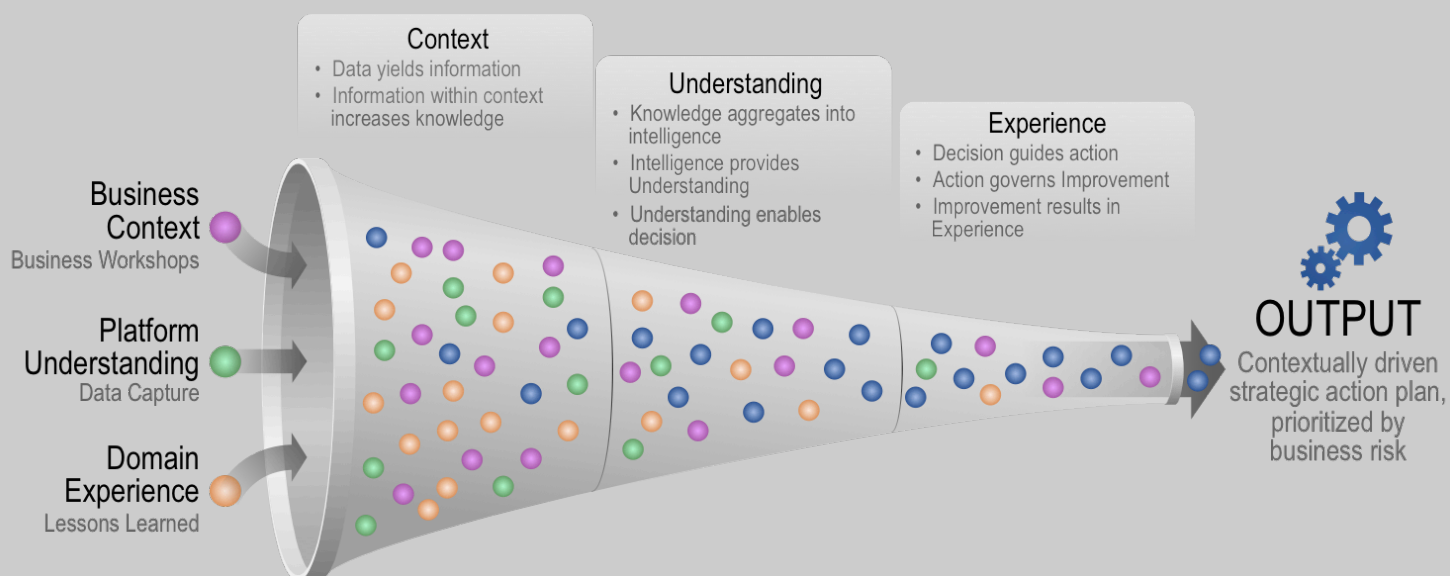
You've invested heavily to secure the perimeter... ...what about issues **INSIDE THE PERIMETER?**

Recent major breaches had **common “insider” attack vectors**
(that didn't hit the perimeter defenses)

! Personally Owned Endpoints	! Data Siphoning or Alteration
! Phishing / Pharming of Credentials	! Vendor/Partner Access to Assets

A **Cyber Risk Reality Check** can discover the risk inside the perimeter to help you better understand:

- **Security, Threat, and Breach Prevention** – which application vulnerabilities are permitting an attack on your network; which malware/botnets were detected; and which devices are “at risk”
- **User Productivity and Application Visibility Control** – which peer-to-peer, social media, instant messaging, and other applications are running
- **Network Utilization and Performance Optimization** – what your throughput, session, and bandwidth usage requirements are during peak hours



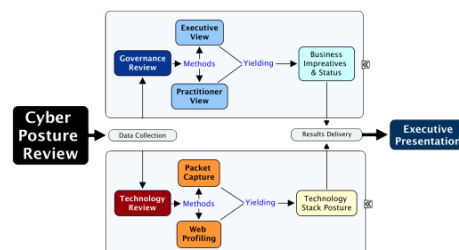
CYBER RISK MITIGATION

Contact Us: info@trustmarq.com | +1.678.795.1612

So... Let's talk about those “unknown gap” gotchas

✓ 1 - Review Your Cyber Posture

Measuring the alignment of the information security program with business objectives, coupled with an eye-opening deep dive into the state of the technology platform, helps build a current posture view. Coupling the people, process, platform, providers, and how an organization handles its precious assets, is what leads to identification of next steps.



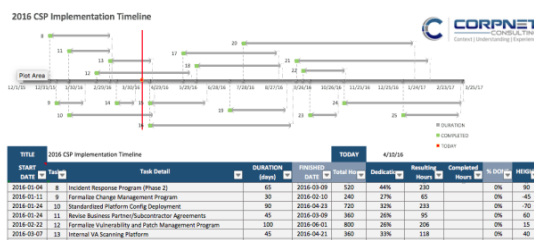
✓ 2 - “Fix” the Low Hanging Fruit



Since over 40% of the most basic security remedies are considered to be quick wins, it makes perfect sense to “claim” success with these low hanging fruit, paving the way for business justification to transform the remaining enterprise. The initial review provides the necessary detail to be decision-able and actionable.

✓ 3 - Justify & Gradually Transform the Enterprise

Few organizations can afford to remediate all assessed findings overnight. It often takes more effort to craft the overarching business justification than most are willing to invest, followed by mentoring to bring about change in a way that yields the most business value. Transformation is driven by business risk, and is best done in a way that influences the organizational culture change.



ABOUT US

We discern the appropriate business **context**, apply deep **understanding**, and leverage best practice industry **experience** to successfully and sustainably deliver the holistic security posture and program.

Clients across a broad spectrum of industries have entrusted Trustmarq Global Services with their holistic security needs for the past two decades.

Contact Us: info@trustmarq.com | +1.678.795.1612